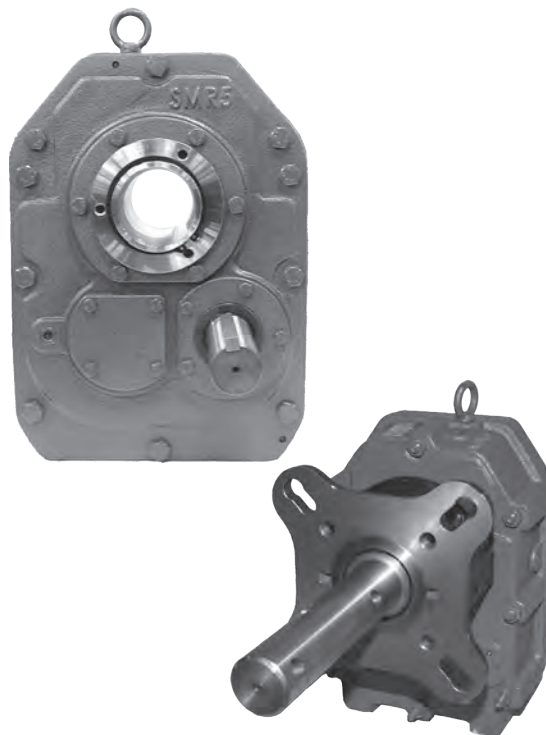


Screw Conveyor Components for Eliminator SCSMR & Ultimate WSMR Series Reducers

Product Specifications (for screw conveyor applications)

- » 9:1, 15:1 and 25:1 ratios
- » Box sizes 2 - 6
- » Heavy duty FCD45 cast iron housing for corrosion resistance
- » CEMA adapter flange bolt-on design allows for easy mounting
- » Drive shaft machined from high strength alloy steel
- » Hardened gears for long-life, A.G.M.A. rated class 11
- » Double lip seal and braided felt seal installed
- » Flat bottom with four (4) tapped holes for additional mounting flexibility
- » Compatible with the Ultimate WSMR and Eliminator SCSMR series shaft mount reducers.



1
ACCESSORIES AND PARTS

Screw Conveyor Drive Shafts



- » Machined from high tensile strength alloy steel
- » Conforms to CEMA standards
- » Three-hole design for easy installation onto screw

| Box Size | Model Number | Drive Shaft Size (inches) |
|----------|--------------|---------------------------|
| 2 | 2SCDS-1.12 | 1 1/2" |
| | 2SCDS-2 | 2" |
| | 2SCDS-2.716 | 2 7/16" |
| 3 | 2SCDS-3 | 3" |
| | 3SCDS-1.12 | 1 1/2" |
| | 3SCDS-2 | 2" |
| 4 | 3SCDS-2.716 | 2 7/16" |
| | 3SCDS-3 | 3" |
| | 4SCDS-1.12 | 1 1/2" |
| 5 | 4SCDS-2 | 2" |
| | 4SCDS-2.716 | 2 7/16" |
| | 4SCDS-3 | 3" |
| 6 | 4SCDS-3.716 | 3 7/16" |
| | 5SCDS-2 | 2" |
| | 5SCDS-2.716 | 2 7/16" |
| 6 | 5SCDS-3 | 3" |
| | 5SCDS-3.716 | 3 7/16" |
| | 6SCDS-2.716 | 2 7/16" |
| 6 | 6SCDS-3 | 3" |
| | 6SCDS-3.716 | 3 7/16" |

Screw Conveyor Flanges



- » Conforms to CEMA standards
- » Bolt-on design allows for easy mounting
- » Heavy duty FCD45 cast iron construction
- » Double lip seal and braided felt seal installed

| Box Size | Model Number |
|----------|--------------|
| 2 | 2SCF |
| 3 | 3SCF |
| 4 | 4SCF |
| 5 | 5SCF |
| 6 | 6SCF |